

# MONITORING & EVALUATION

## LOCAL SUSTAINABLE TRANSPORT FUND PROJECT PROGRESS UPDATE | MARCH 2015

Derby City Council  
September 2015





# The main delivery phase of Connected, Derby's Local Sustainable Transport Fund project, ended in March 2015.

However, Connected has received further funding from the Department for Transport and the Local Growth Fund, enabling many of its core activities to continue to March 2016. A full, final monitoring and evaluation report detailing Connected's achievements and its impact will therefore be published in Spring 2016. In the interim, this Progress Update showcases some of Connected's key outputs to date.

A Monitoring & Evaluation Progress Report from Spring 2014, covering the first full year of Connected activity, is available at [www.derbyconnected.com/about](http://www.derbyconnected.com/about).

## ENGAGING WORKPLACES

### TRAVEL ADVICE SERVICE

130

WORKPLACES

working with the Travel Advice Service to become more accessible by sustainable transport.



125

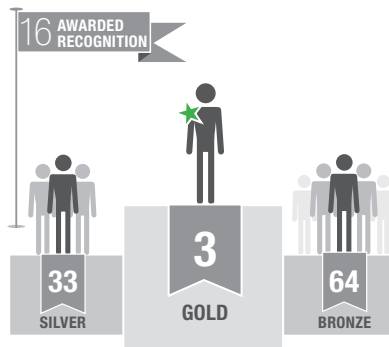
COMPLETED  
Travel Action Plans

### CONNECTED ACCREDITATION SCHEME

116

WORKPLACES

endorsed in spring 2015 for improving sustainable commuting.

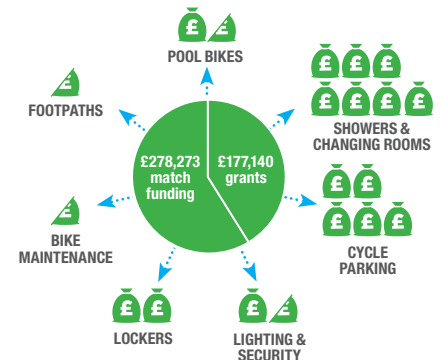


### WORKPLACE GRANTS

18

AWARDED

to date, with showers and cycle parking the most popular improvements.



Derby City Council

© Derby City Council 2015

Derby City Council, The Council House,  
Corporation Street, Derby DE1 2FS

01332 293111

[www.derby.gov.uk](http://www.derby.gov.uk)



transport for quality of life

Researched and prepared by

Transport for Quality of Life Ltd.

[www.transportforqualityoflife.com](http://www.transportforqualityoflife.com)



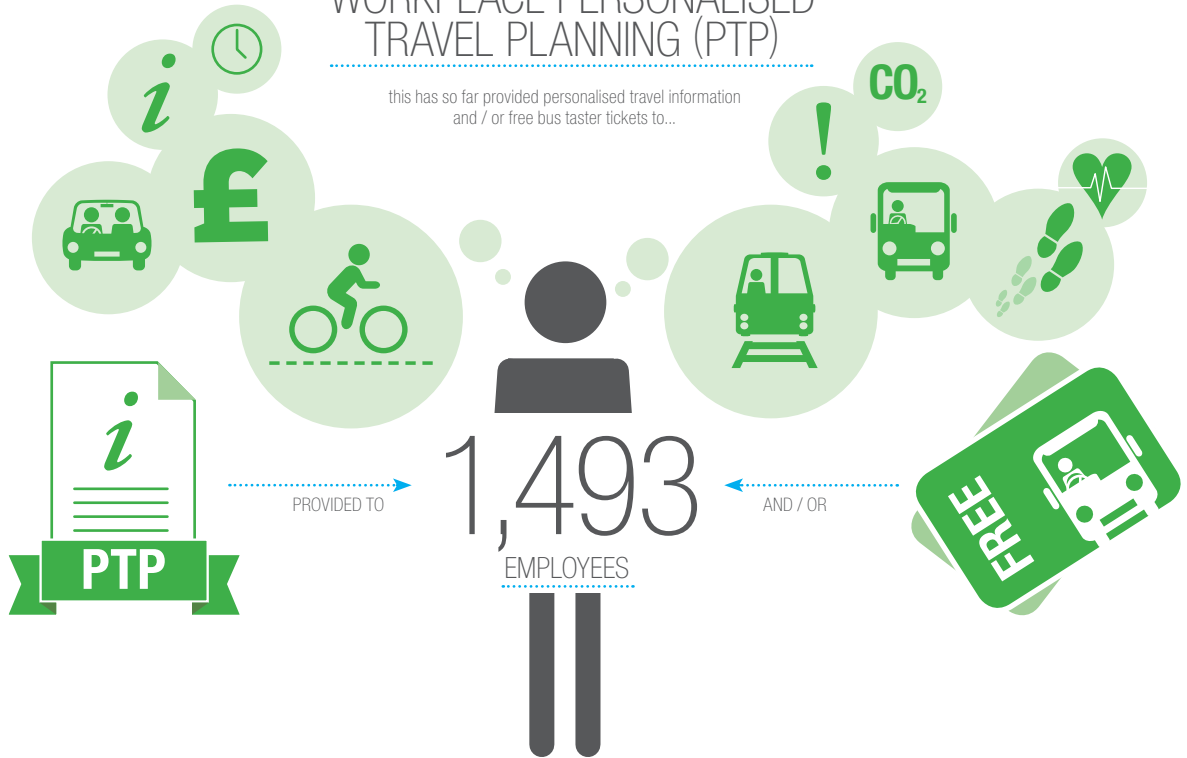
Connected

[www.derbyconnected.com](http://www.derbyconnected.com)



# WORKPLACE PERSONALISED TRAVEL PLANNING (PTP)

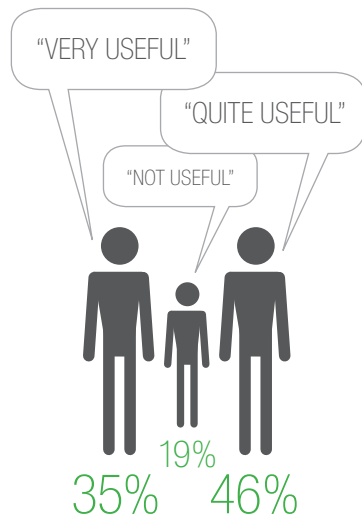
this has so far provided personalised travel information and / or free bus taster tickets to...



## CUSTOMER FEEDBACK

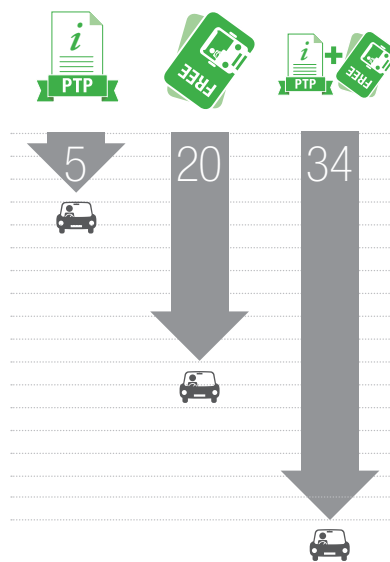
### USEFULNESS OF SERVICE

Survey respondents who received a personal travel plan said...



### CHANGES IN COMMUTER TRAVEL

Drive alone trips were reduced.



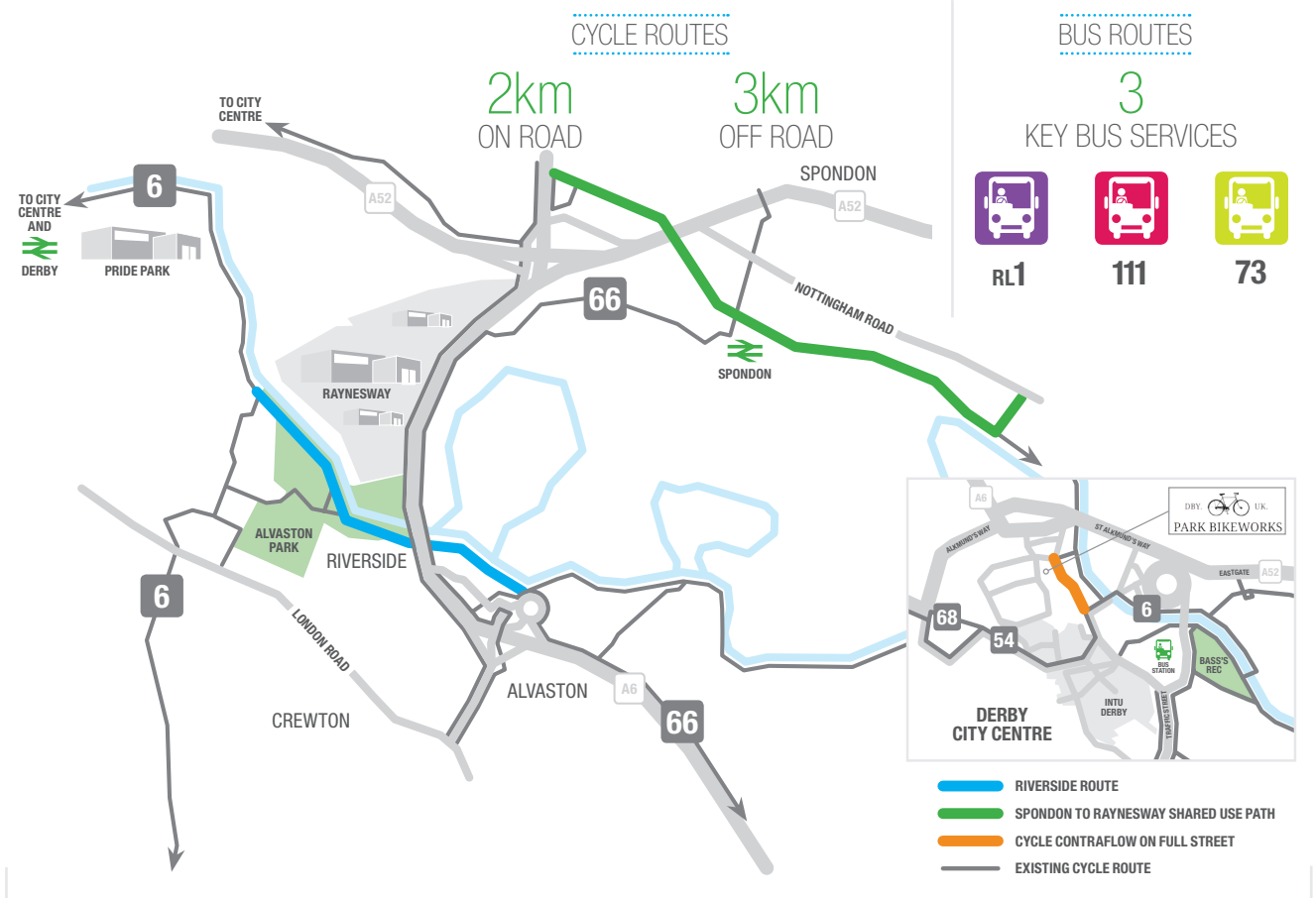
Changes in travel can be attributed to the PTP service.



Data taken from Derby Connected Workplace Personalised Travel Planning Project: Monitoring & Evaluation Report, Transport for Quality of Life, July 2015. Available to download at [www.derbyconnected.com/about](http://www.derbyconnected.com/about).



## ROUTE IMPROVEMENTS



## CYCLING TO EMPLOYMENT

### CYCLE TRAINING



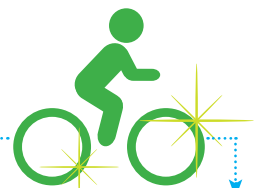
535  
ADULTS

### LED CYCLE RIDES



156  
ATTENDEES

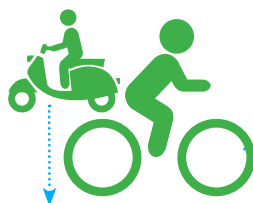
### BIKE BACK DERBY



541  
REFURBISHED

500  
SOLD

### WHEELS TO WORK



41  
MOPED LOANS

233  
BIKES

### PARK BIKEWORKS



917  
MEMBERS

3,773  
PARKED BIKES